

ANCCG BRIEF ON ATC

ANCCG

James Evans

Dec 2019

Airways New Zealand

- **Formed in 1987 as an SOE**
- **Previously part of MOT, CAD.**
- **Employs approx 850 people**
- **350 Air Traffic Controllers**
- **50 Air Traffic Support Staff**
- **Others include Policy and Design, Strategy and Development, Software Design, Finance, Legal, Technicians, Human Resources etc.**

W h a t i s A i r T r a f f i c C o n t r o l

AIRWAYS

**Helping planes travel safely and
expeditiously**

AT AERODROMES

AROUND AERODROMES

BETWEEN AERODROMES

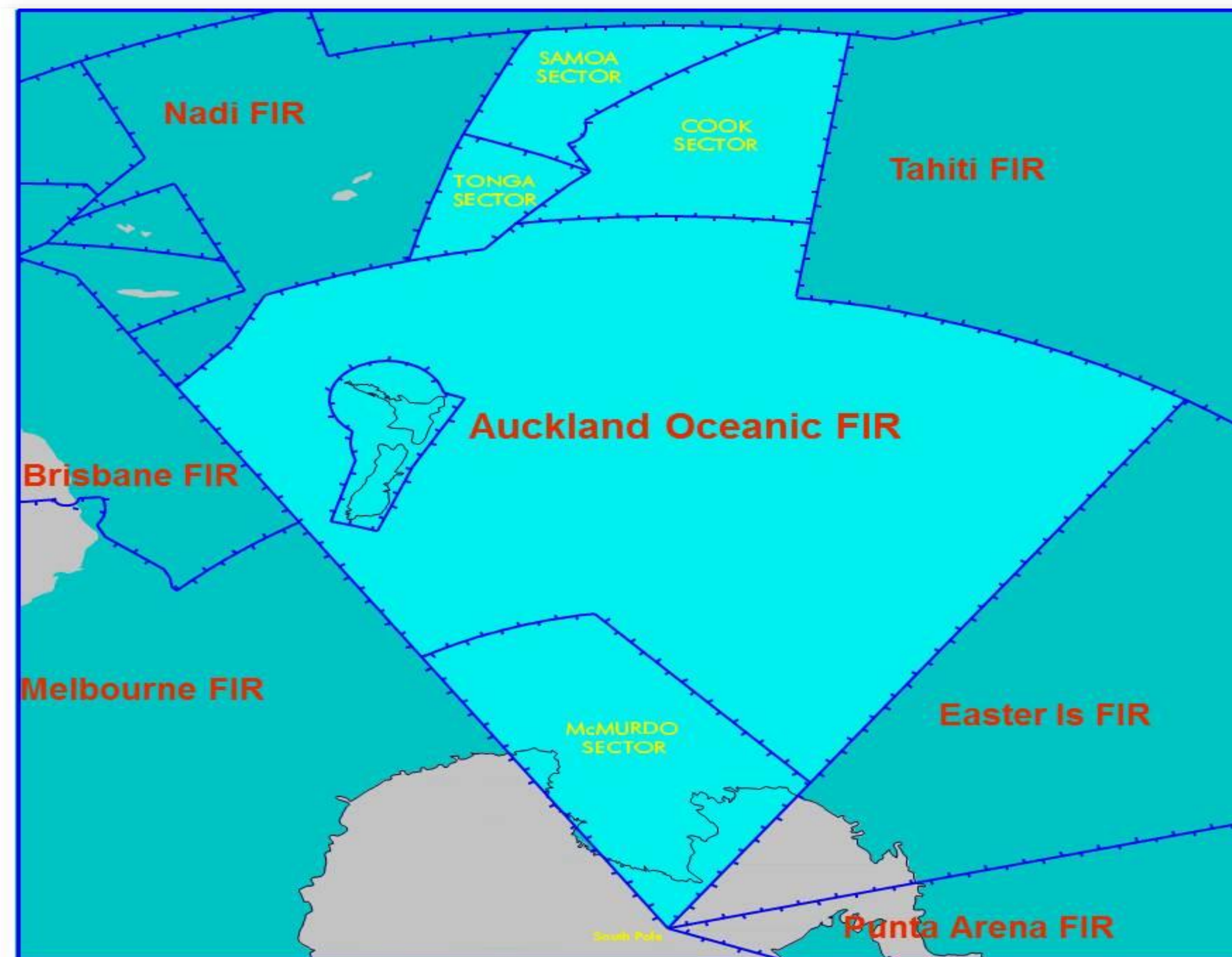
THROUGH OUR OCEANIC

AIRSPACE

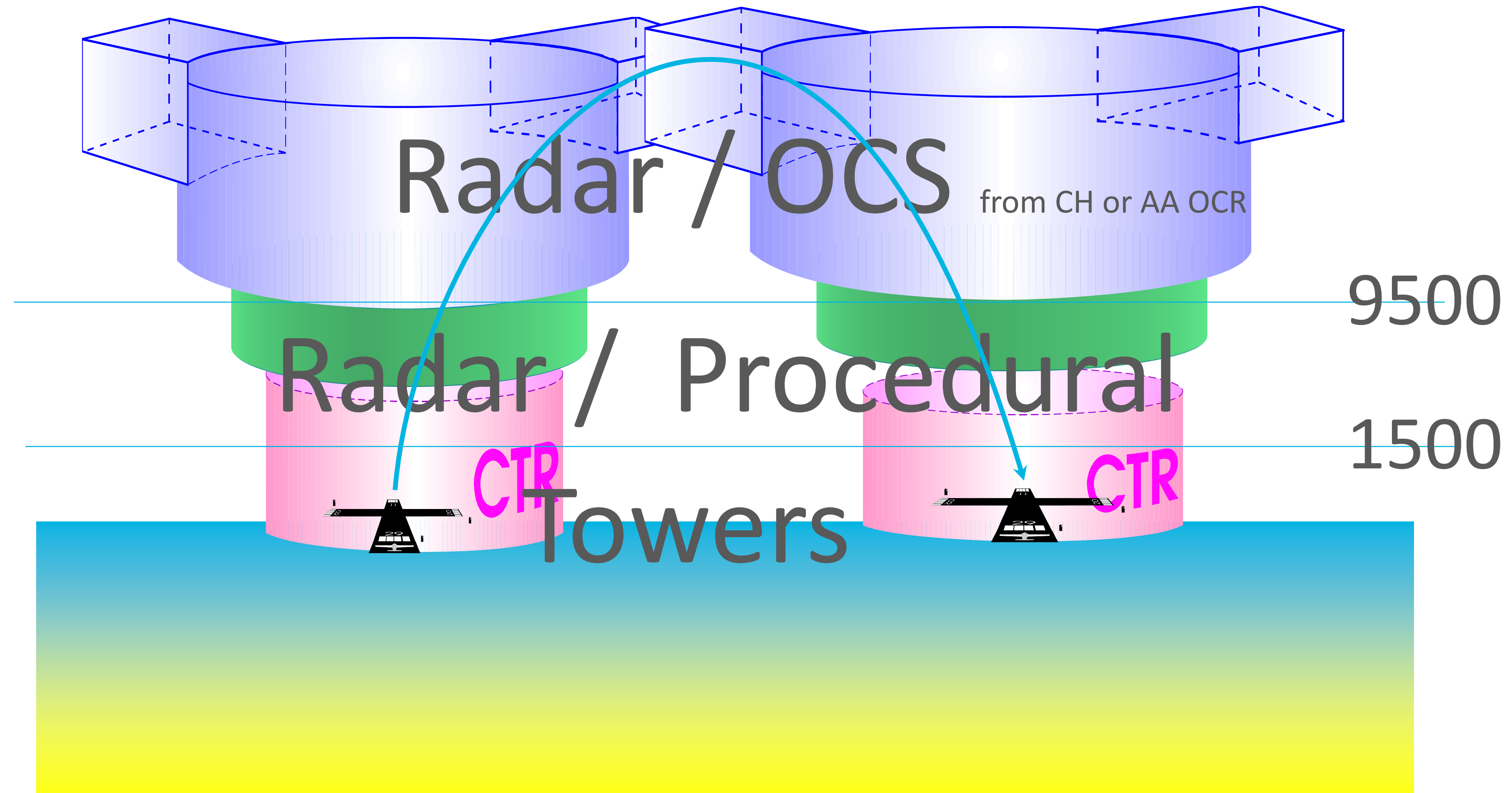
**We don't let things
hit the fan!**



O u r P a t c h



The Upside down wedding cake



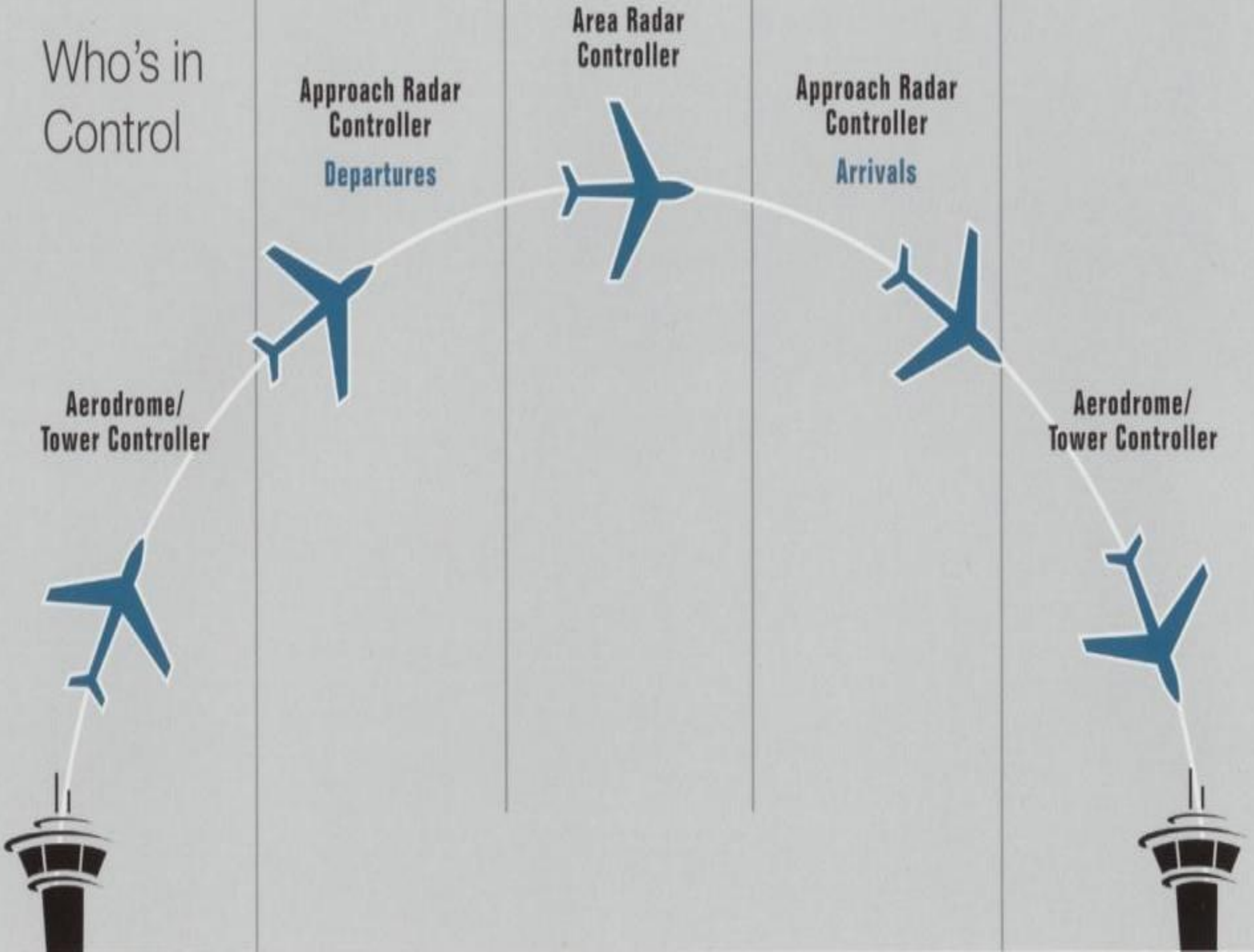
TOWERS



R A D A R C E N T R E



Who's in Control



RUNWAYS AND WHICH TO USE?

Runways are named after their approximate magnetic direction. Auckland has two. Aircraft take off and land into the wind.



SID = Standard Instrument Departure

It's how a departing aircraft gets from the Runway onto a published route taking into account;

- 1. Terrain, Airspace, Obstacles.**
- 2. Environmental Factors e.g. Noise, Airline fuel burn/CO2**
- 3. RWY capacity and separation from other aircraft.**

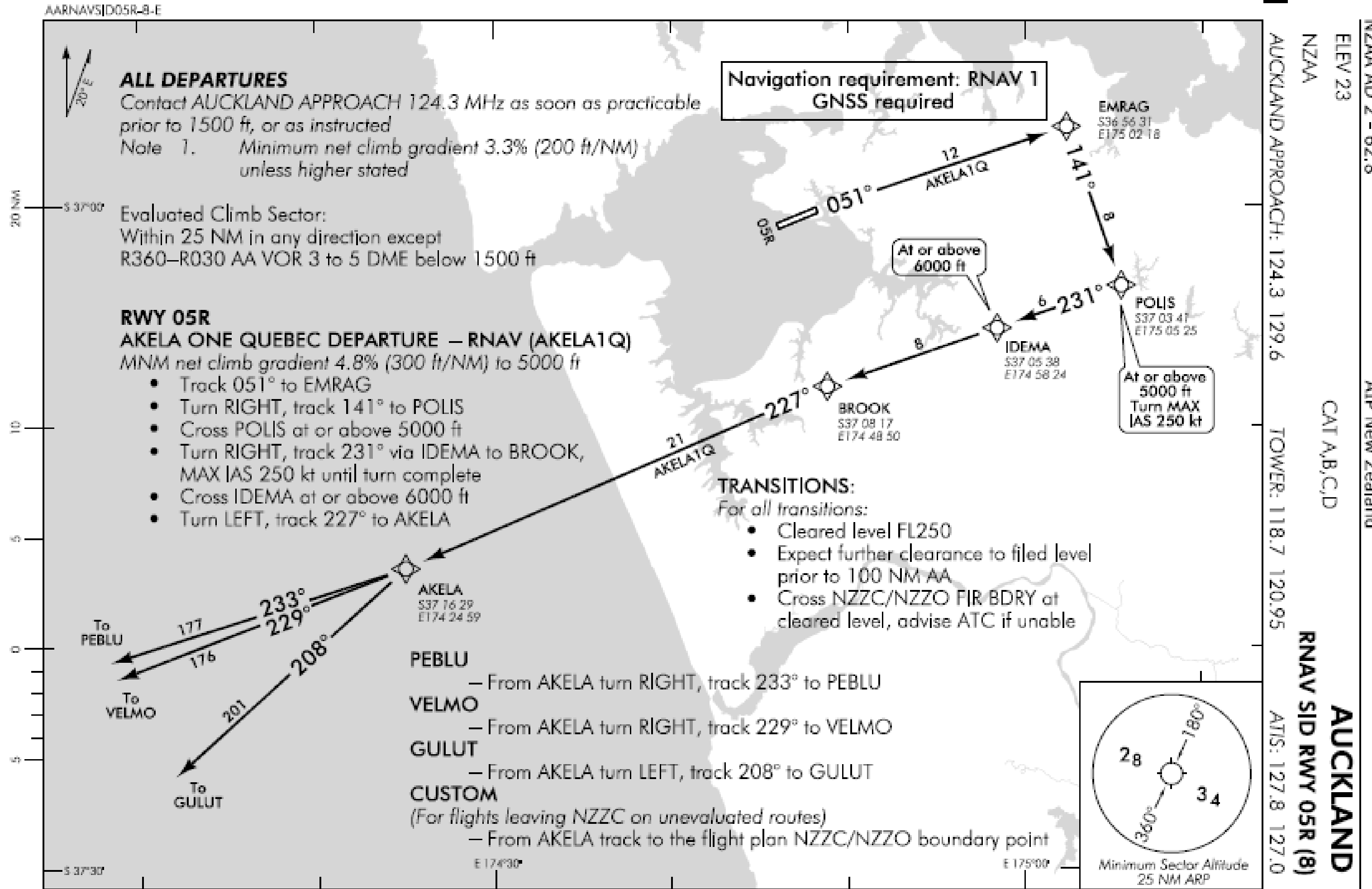
The same factors are taken into account for inbound aircraft to get from their route to the Instrument approach that puts them on the Runway.

STAR = Standard Instrument Arrival

Effective: 9 NOV 17

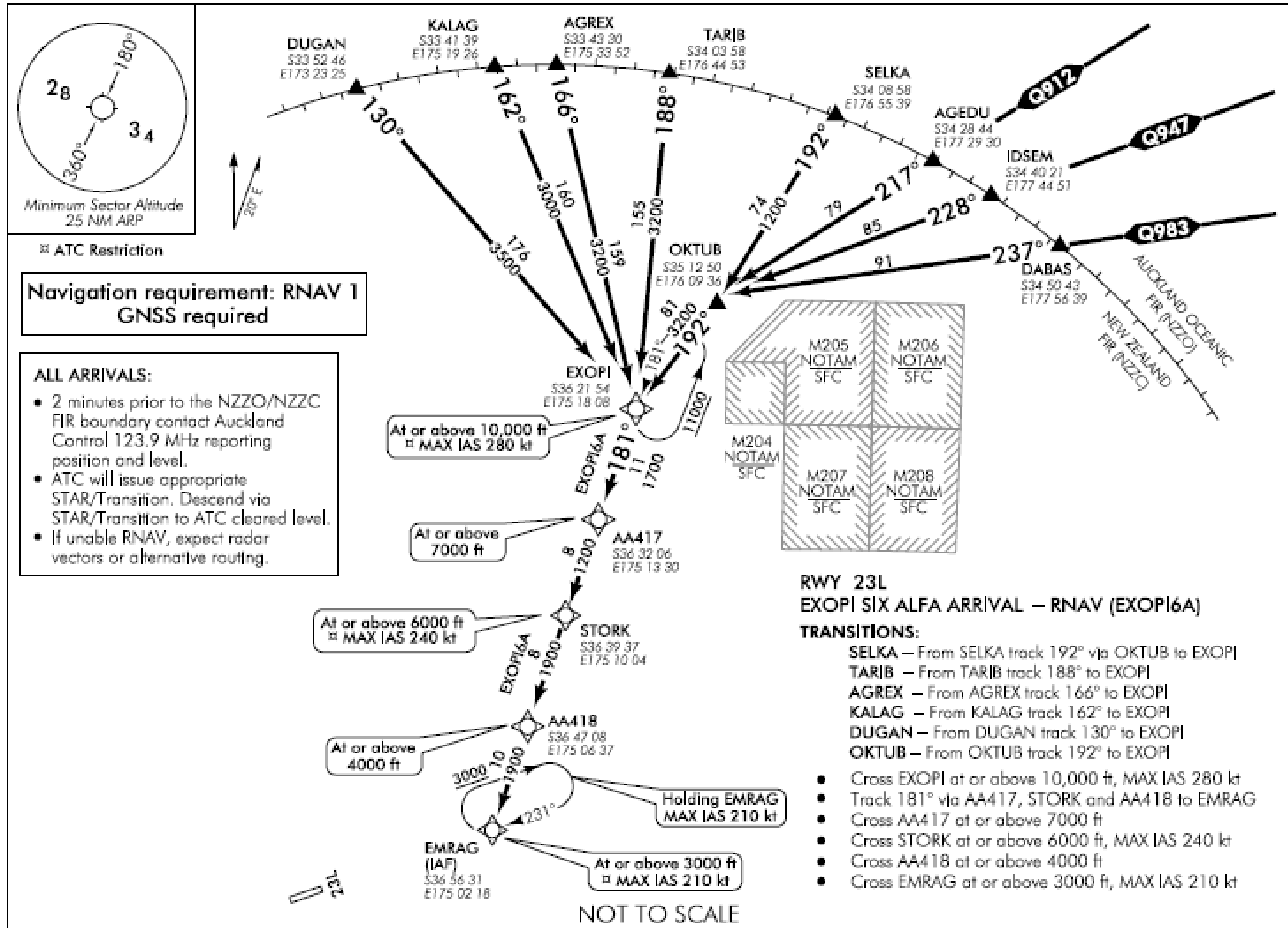
© Civil Aviation Authority

AUCKLAND
RNAV SID RWY 05R (8)



Changes from 31 MAR 16: ATC call sign amended, TOWER secondary FREQ.

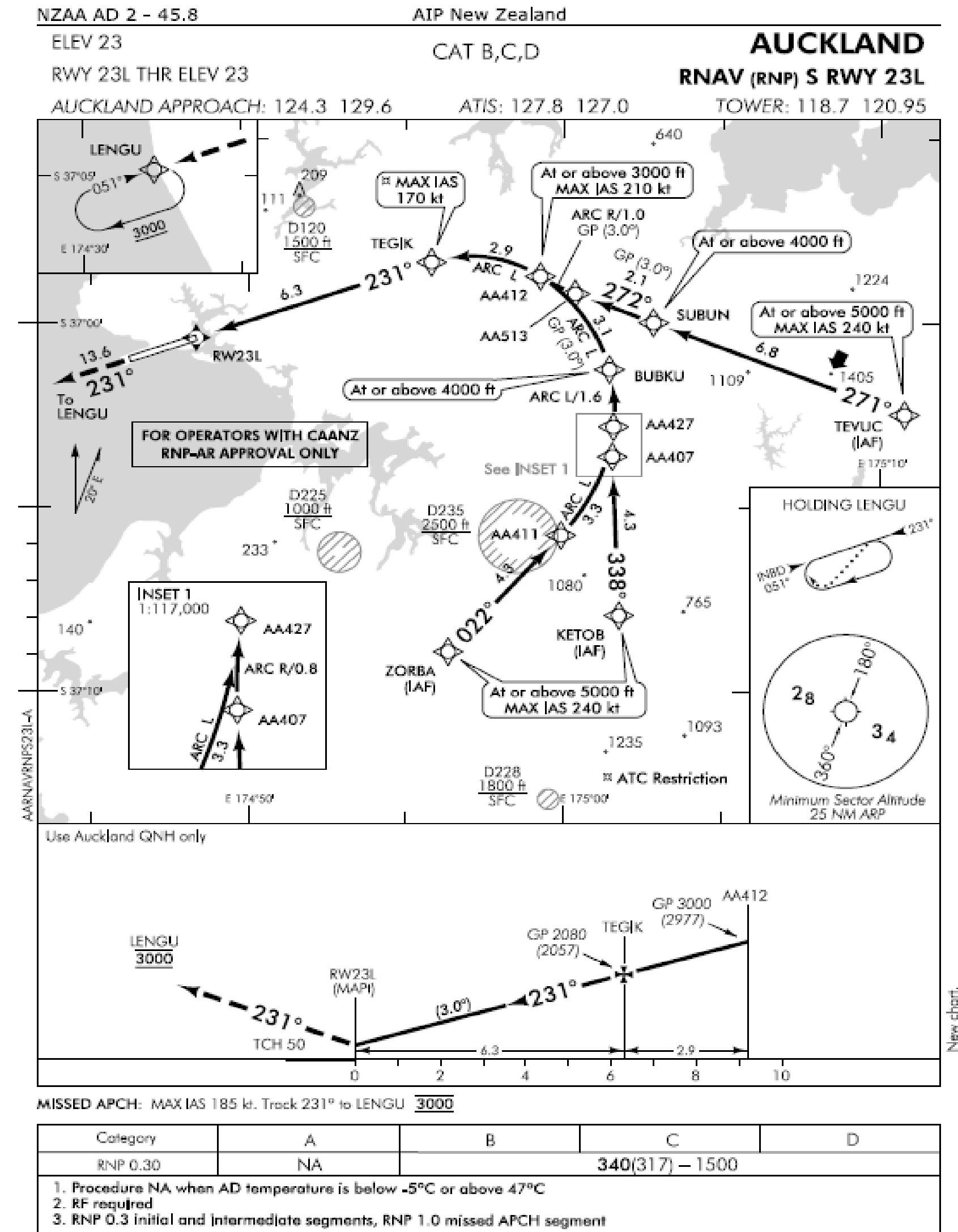
AARNAVSTAR23L-2-P



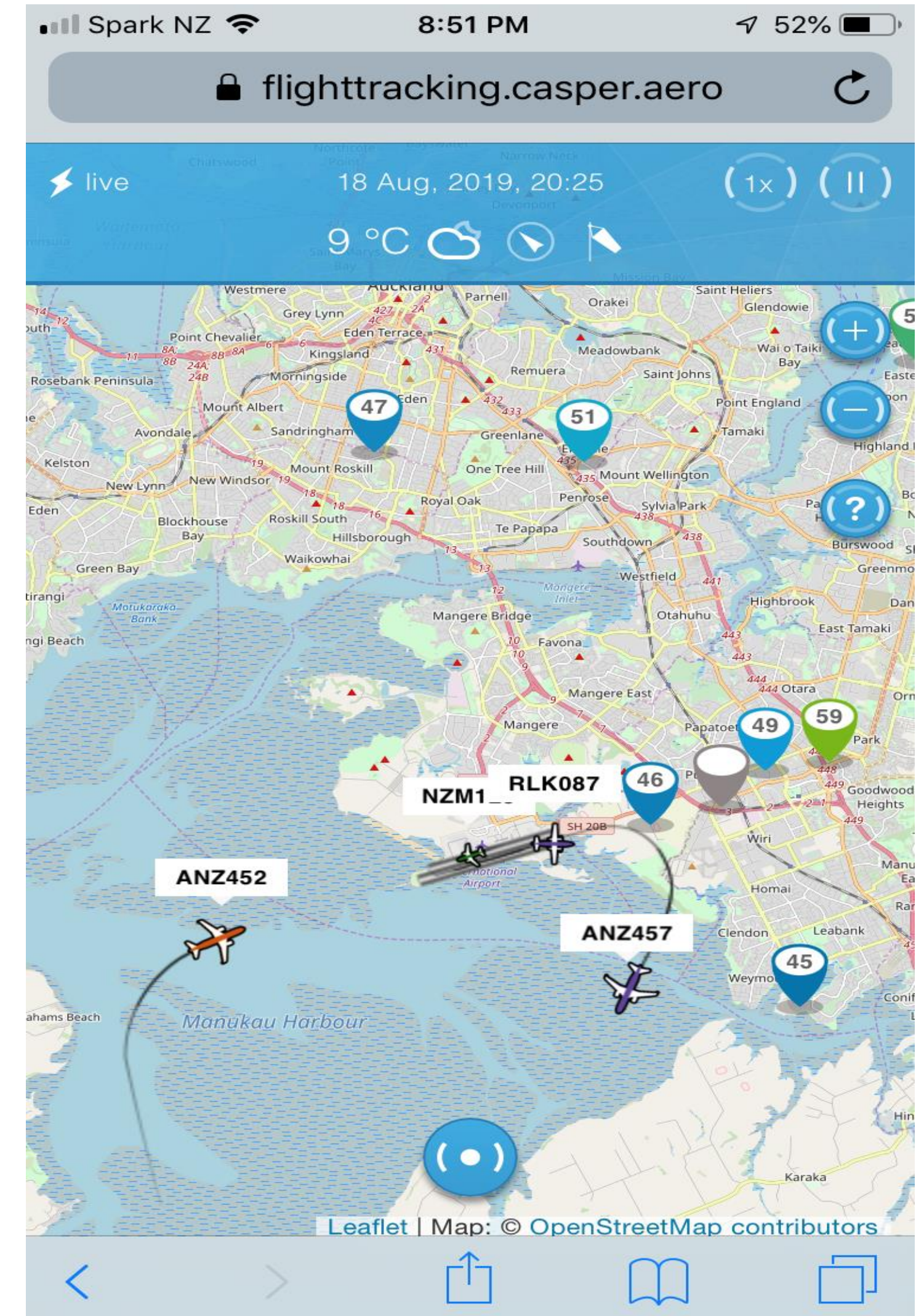
Changes from 1 FEB 18: DABAS to OKTUB track correction.

NOISE INITIATIVES FOR AUCKLAND

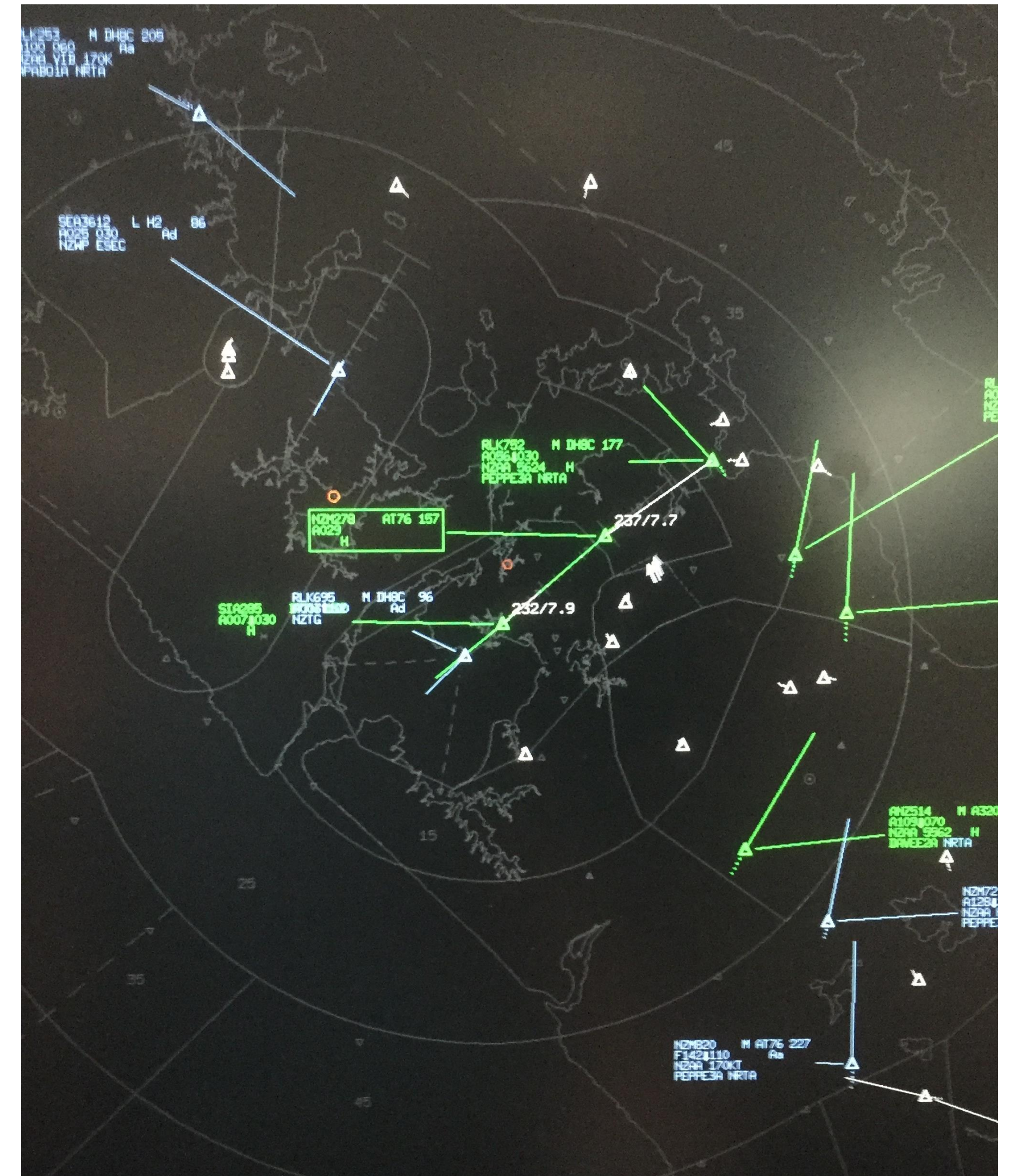
- Idle Power
- Less Fuel
- Less Emissions
- Only used between 7am and 10pm



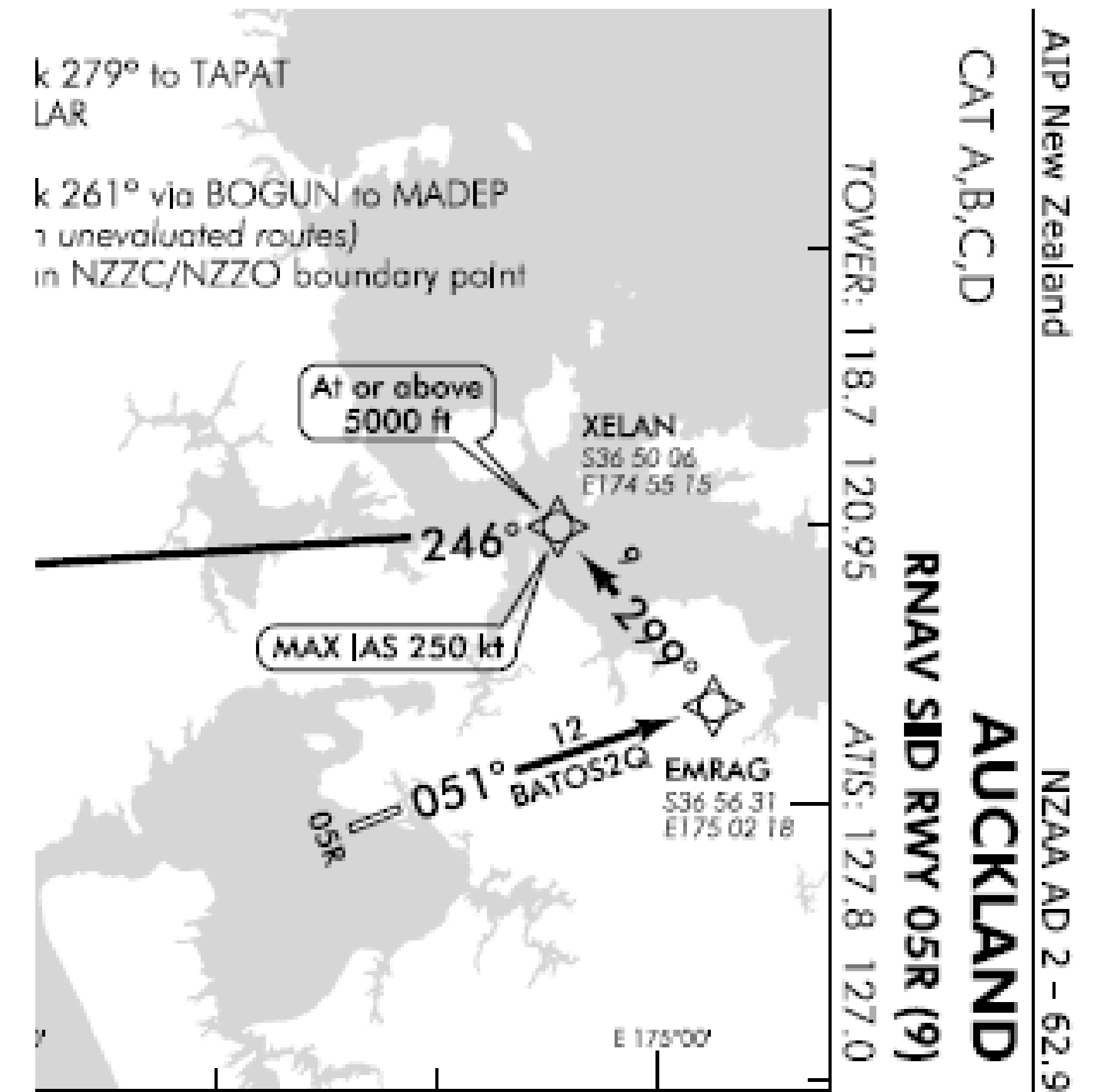
- **AIAL with Marshall Day have developed a streamlined and transparent reporting process for community members to raise concerns about noise and specific flights using CASPER.**
- **Ongoing education of elected ANCCG community representatives around air traffic control procedures and aircraft/airline operations.**



- **Preferential RWY's used between 11pm and 6am when weather and traffic allow.**
- **Night STARs for RWY23L between 11pm and 6am taking over 60% of Tasman traffic clear of the city.**
- **Enforcement of 250kts maximum below 10000ft at night over built up areas.**
- **Most Nth America, Rarotonga and Tahiti flights off RWY23L turned left passing south of Papakura.**



- **Non Jets SIDs turning north at 500ft not used between 10pm and 7am.**
- **Jets not allowed to do Visual Approaches from north of the RWY Centreline at any time.**
- **All aircraft from the south for RWY23L between 10pm and 7am join final at or outside 8nm final.**
- **All departures over built up areas between 10pm and 7am remain on SID.**



- **New SID transitions to Sth AUS**
- **Night time STARs for RWY05R from East passing south of Papakura**

