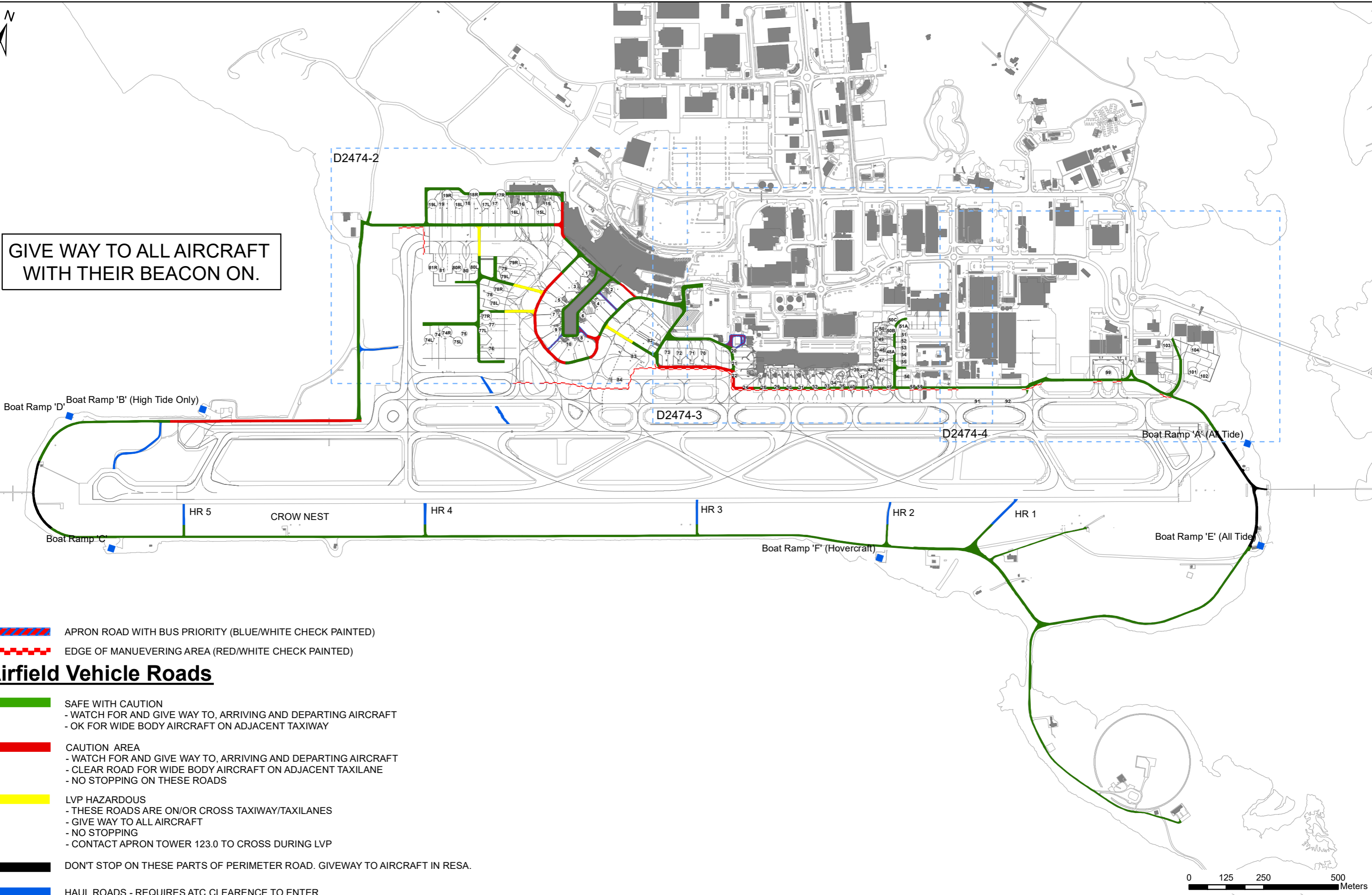











GIVE WAY TO ALL AIRCRAFT WITH THEIR BEACON ON.



-  APRON ROAD WITH BUS PRIORITY (BLUE/WHITE CHECK PAINTED)
-  EDGE OF MANUEVERING AREA (RED/WHITE CHECK PAINTED)
- Airfield Vehicle Roads**
-  SAFE WITH CAUTION
 - WATCH FOR AND GIVE WAY TO, ARRIVING AND DEPARTING AIRCRAFT
 - OK FOR WIDE BODY AIRCRAFT ON ADJACENT TAXIWAY
-  CAUTION AREA
 - WATCH FOR AND GIVE WAY TO, ARRIVING AND DEPARTING AIRCRAFT
 - CLEAR ROAD FOR WIDE BODY AIRCRAFT ON ADJACENT TAXILANE
 - NO STOPPING ON THESE ROADS
-  LVP HAZARDOUS
 - THESE ROADS ARE ON/OR CROSS TAXIWAY/TAXILANES
 - GIVE WAY TO ALL AIRCRAFT
 - NO STOPPING
 - CONTACT APRON TOWER 123.0 TO CROSS DURING LVP
-  DONT STOP ON THESE PARTS OF PERIMETER ROAD. GIVEWAY TO AIRCRAFT IN RESA.
-  HAUL ROADS - REQUIRES ATC CLEARENCE TO ENTER.

